

# *ALI D'ORO*



Catalogue 2023-2

by Marfed



Authorized resale:

Exclusive products to  
dress ours  
Honda Gold Wing GL1800

**BROWSE**

To order:

800 946539  
+39 022101121



## ABOUT US

**A PASSION THAT BECOMES A  
JOB**

**We plan, design and develop  
products for**

**GoldWing owners** looking to  
improve the already rich  
standard equipment.

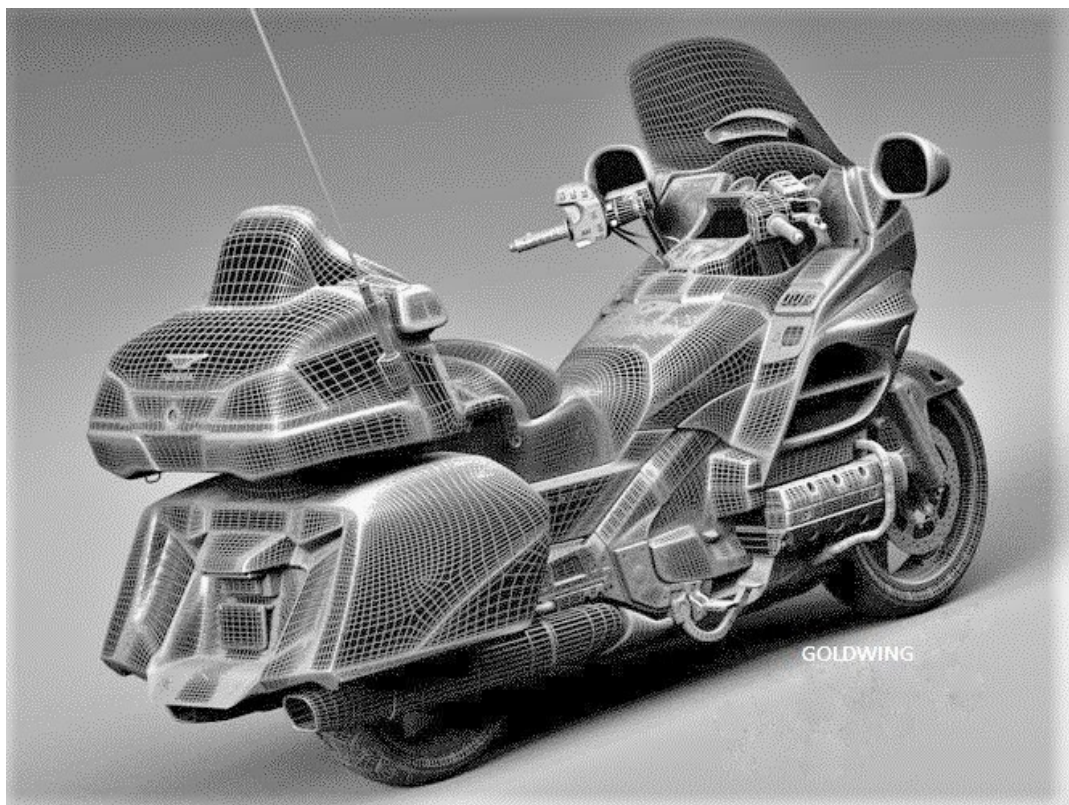
**Our mission is to make  
and distribute unique and  
integrated products.**

We start from an idea, continue with the design and move on to its implementation through the most advanced 3D development and printing technologies.

---

### **Unique service by Kappa Systems**

We want to meet the high expectations of all Wingers, surprising them with our innovative creations and solutions.



# OUR JOB

## WE TAKE CARE OF YOUR GoldWing

### Design

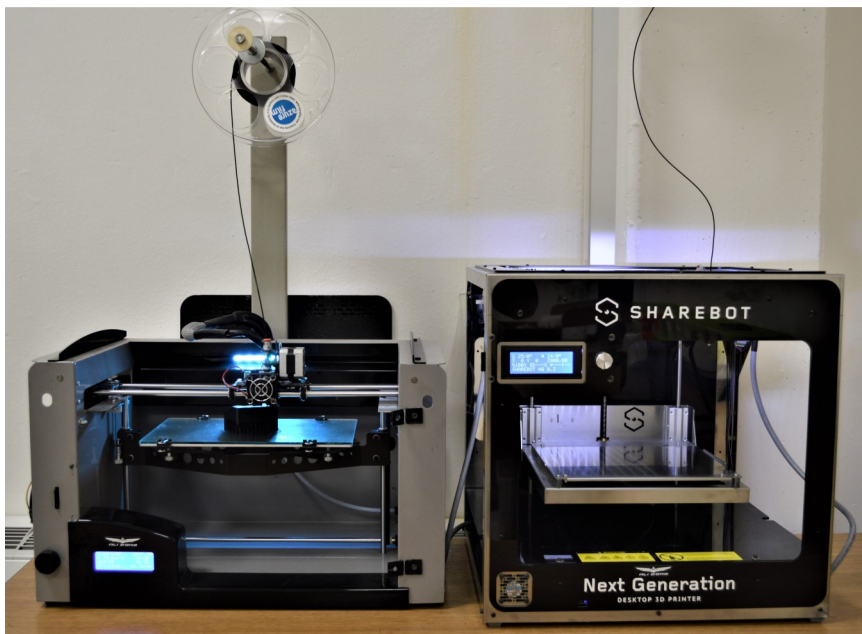
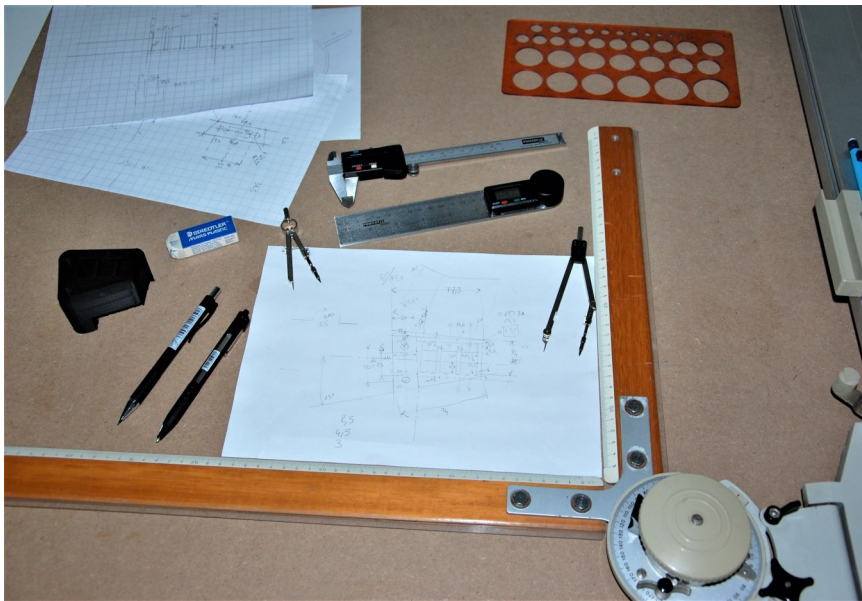
We start from an idea on a drawing sheet with provisional measurements.

### Drawing

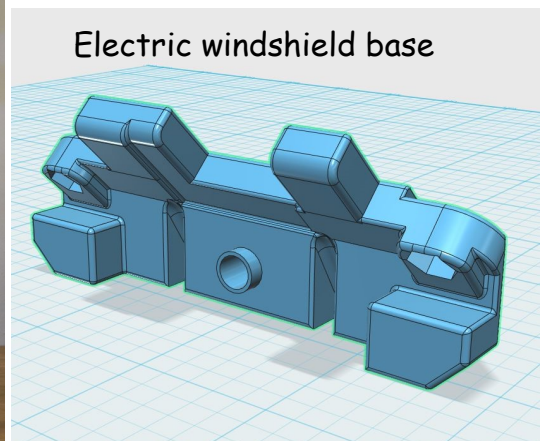
With a specific design program we develop the product in **3D** so as to view it and be able to modify it to our liking.

### Print

Finally we move on to the prototype and after the necessary modifications, we create the final product with **3D** printers that transform simple ideas into reality.



Electric windshield base



# GL1800 2018-21 \* (see page 27: Seat Cover)



These new push-button panels integrate perfectly with the existing controls.

They have 3 switches with the relative red LED indicators.

The kit is supplied already wired with 1.5 meters of cable and fixing screws.

**(On request, with a small surcharge, 2- position buttons and/or switches can be fitted, and the LED lights can be of different colours).**

## 017.5 Handlebar switch (left) 3 buttons for Goldwing 2018-21

Price: 160 €

GL1800 TOUR DCT		GL1800 TOUR		GL1800 F6B		GL1800 TOUR DCT BAULE 61L	
--------------------	--	----------------	--	---------------	--	---------------------------------	--

## 017.6 Handlebar switch (right) 3 buttons for Goldwing 2018-21

Price: 160 €

GL1800 TOUR DCT		GL1800 TOUR		GL1800 F6B		GL1800 TOUR DCT BAULE 61L	
--------------------	--	----------------	--	---------------	--	---------------------------------	--



## Oval lenses

### 010.2 Fog light with oval lens (right + left) Goldwing 2018-21

These fog lights, with their special lens, illuminate in depth, significantly improving visibility (waterproof up to 1 m IP67). They are supplied in pairs, complete with specific supports.

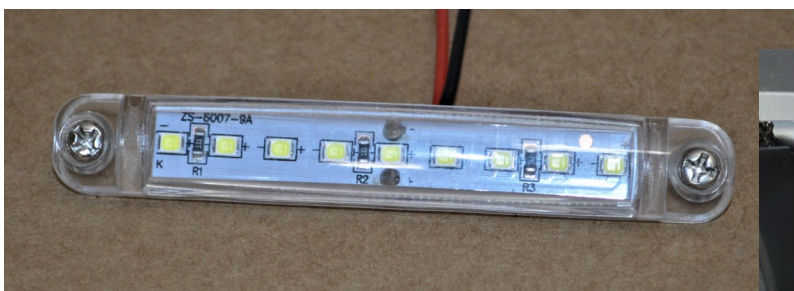
(power button excluded)

**Price: 220 €**

**(installation €80, excluding button)**



GL1800 TOUR DCT		GL1800 TOUR		GL1800 F6B		GL1800 TOUR DCT BAULE 61L	
--------------------	--	----------------	--	---------------	--	---------------------------------	--



### 054.1 Automatic LED lighting trunk 2018-21

This LED lamp allows you to illuminate the trunk. Connecting it to the Goldwing system, it turns on automatically when opened, turning off automatically after a certain time if the trunk remains open (thus avoiding draining the battery). Wiring excluded.

**Price: 30 € (Installation 90€)**



GL1800 TOUR DCT		GL1800 TOUR		GL1800 F6B		GL1800 TOUR DCT BAULE 61L	
--------------------	--	----------------	--	---------------	--	---------------------------------	--



**020.1 Adjustable clutch and brake levers (right + left) 2018-21**

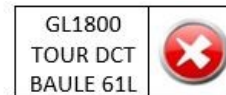
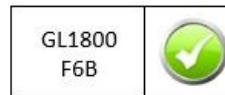
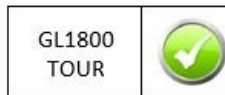
These innovative levers are adjustable in length and width. They are also accident-safe, lifting when necessary. The black color makes them discreet; the aluminum with which they are made is light. All this gives the bike an appealing, sporty and technological touch.

Note: You can also engage the steering lock with the mirror folded, protecting it when parking



**Price: 60 €**

**(Installation 10€)**

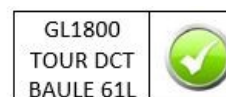
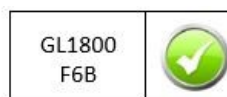
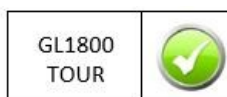
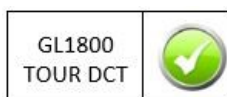


**040.3 Black side stand with Logo 2018-21**

This stand triples the support surface of the side stand, significantly decreasing the possibility of sinking into unstable surfaces. It must be fixed to the foot of the side stand with the appropriate Allen screw.

**Price: 35 €**

**(Installation 5€)**





This innovative product integrates perfectly with the bike, brilliantly fulfilling the function of luggage rack, spoiler and supplementary light (position, stop, progressive indicators). Its structure, in sturdy reinforced aluminum, allows a load of 8 kg and easy luggage attachment.

The powder coating (matt-black) makes it discreet and the laser-embossed logo finishes it off.

Installation is quick and easy thanks to its assembly kit (wiring with plug, cable tray, self-adjusting washers, rubber pads, screws).

**ASSEMBLY with our kit is SIMPLIFIED In addition, the led bar has: POSITION LIGHT, STOP and PROGRESSIVE ARROWS**

**055.5 Multifunctional luggage rack for Goldwing Tour 2021 (including installation kit) Price: 480 € (Installation 180€)**

**055.6 Luggage rack without light for Goldwing Tour 2021 (including installation kit) Price: 380 € (Installation 120€)**



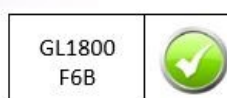
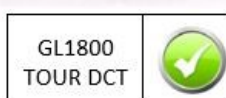
**FRECCE SEQUENZIALI**



**013.5 Orange sequential arrows and white positions for Goldwing 2018-21**

These scenographic arrows perfectly replace the originals. At rest, the white position is lit, which recalls the style of the central headlight, but as soon as the indicators are switched on, the position switches off and the orange sequential light is activated

**Price: 220 € (Installation 30€)**





DCT Left attack



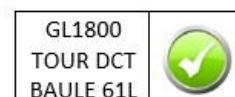
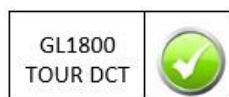
no DCT Left and right attack  
DCT Right attack

**041.6 Induction phone holder for DCT on handlebar (left)**

This phone holder has an induction charging system, so you don't need to connect cables to your phone. It also has a watertight switch on the back that allows it to be turned off. The attack is specific for left-hand mounting DCT versions

Price: 140€

(Installation 60€)

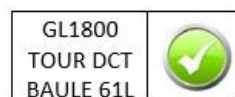
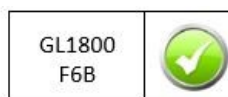
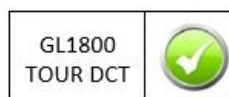


**041.7 Handlebar induction phone holder (left or right / DCT right only)**

This phone holder has an induction charging system, so you don't need to connect cables to your phone. It also has a watertight switch on the back that allows it to be turned off. The attack is specific for the left or right **NON** DCT versions (it can also be mounted on DCT only on the right side)

Price: 140€

(Installation 60€)



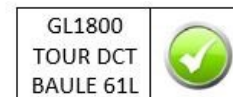
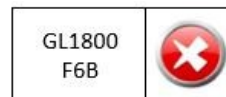
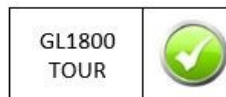




**059.4 Boot mats and bags 2021-23**

These comfortable carpet mats finished with edging protect and sound-proof trunks and bags, and the embroidered logo adds an extra touch of class.

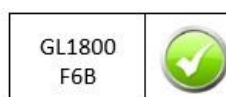
**Price: 50 €**



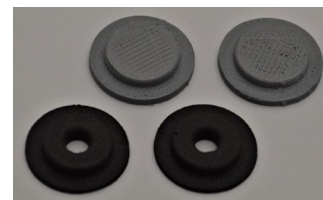
**043.0 Wind deflectors 2018-22**

These deflectors are very comfortable, as they protect and, if necessary, funnel the air. They also improve the profile of the bike by filling a visual gap.

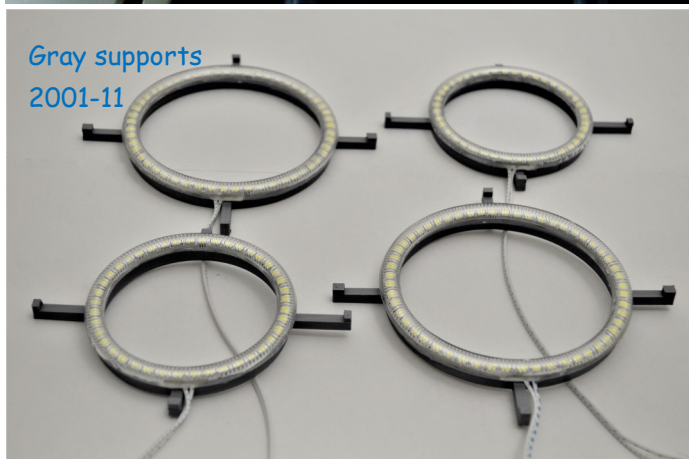
**Price: 140€ (Installation 30€)**



# GL1800 2001-17



cap for the positions and the cable gland cap



**001.2 SILVER background headlights complete with Angels, double white LED rings APPLICATION 2001-11**

**001.3 BLACK background headlights complete with Angels, double white LED rings APPLICATION 2012-17**

**APPLICATION Price: € 400 (installation on motorbike including wiring €300)**

This spectacular lighting system completely renews the front of the bike, making your GL1800 unmistakable, with its super bright ring lights (position/daytime 2 per headlight).

**It is proposed in the APPLICATION version that we carry out directly on your lights** (also in replacement, we always keep a pair of lights ready for replacement).

**Attention, only LED or Xenon high beam and low beam lamps should be used.**

GL1800 2012-17	<input checked="" type="checkbox"/>	GL1800 2006-11	<input checked="" type="checkbox"/>	GL1800 2001-05	<input checked="" type="checkbox"/>	F6B	<input checked="" type="checkbox"/>	GL1500	<input type="checkbox"/>
-------------------	-------------------------------------	-------------------	-------------------------------------	-------------------	-------------------------------------	-----	-------------------------------------	--------	--------------------------

**075.5 Super Bright High Beam H7 LED Bulbs (Pair) 2001-17**



H7 LED 6000K lamps compatible with all models of the Honda Goldwing GL 1800

Compared to the original halogen and xenon lamps, these have a higher yield and at the same time heat less, consume less, last longer and turn on immediately. Immediate activation is perfect for high beam (it can also be used for low beam although not recommended). The lamps do not create any disturbance to the CBs. The assembly does not require modifications to the electrical system (excellent to use in combination with the LED Kit art.003.1 to have no color difference)

**Price: 60 € (Installation 90€ 01-05/ 90€ 06-17)**



Before and after...



**003.1 Low beam / high beam LED kit with specific attachments (pair) 2001-17**

Goldwing GL 1800 models.

Goldwing taillight bulbs; 2 carbon supports; 2 metal control units complete with plugs.

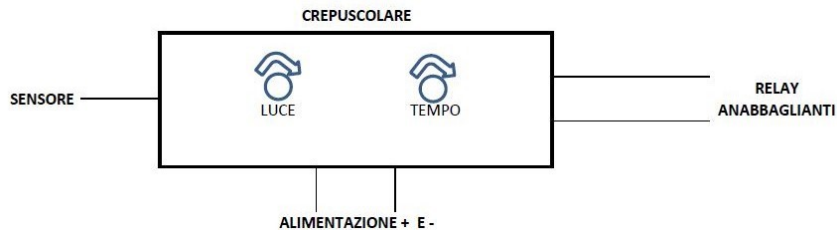
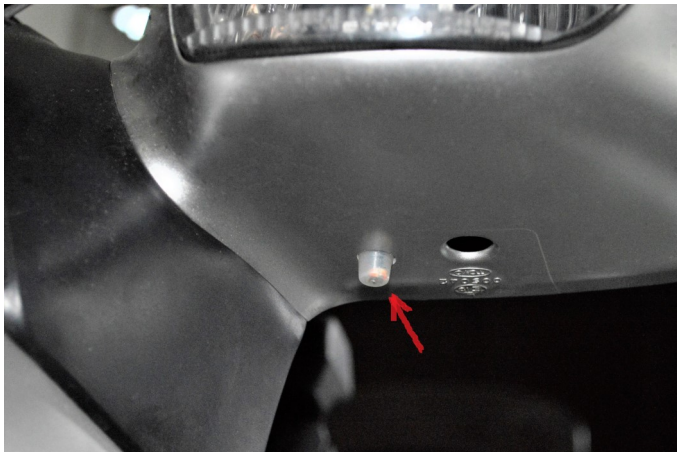
Compared to the original halogen and xenon lamps, these have a higher yield and at the same time heat less, consume less, last longer and turn on immediately

The LED lamp kit with its immediate ignition is perfect for both low beam and high beam.

The control units do not create any disturbance to the CB. Assembly does not require modifications to the electrical system

**Price: 120 € Installation 60€**

GL1800 2012-17	<input checked="" type="checkbox"/>	GL1800 2006-11	<input checked="" type="checkbox"/>	GL1800 2001-05	<input checked="" type="checkbox"/>	F6B	<input checked="" type="checkbox"/>	GL1500	<input type="checkbox"/>
-------------------	-------------------------------------	-------------------	-------------------------------------	-------------------	-------------------------------------	-----	-------------------------------------	--------	--------------------------



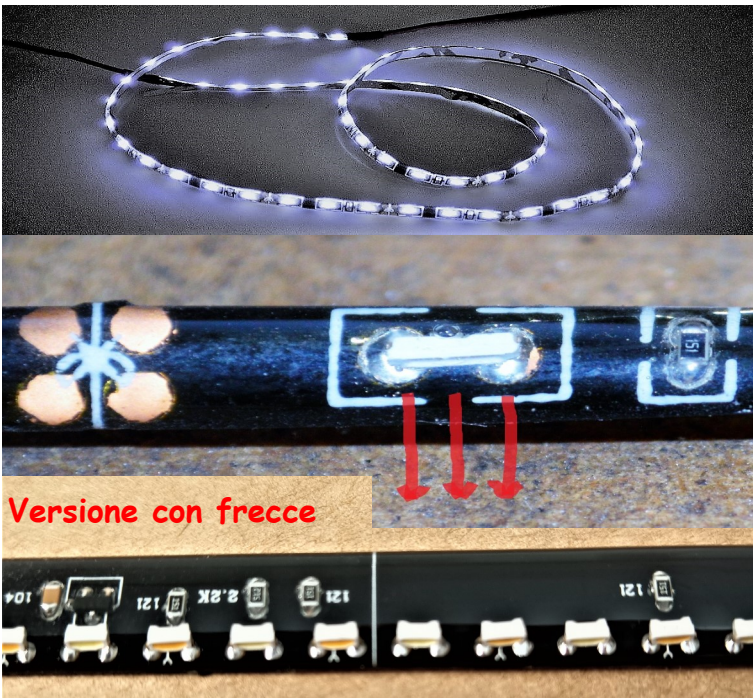
**005.0 Twilight switch for automatic switching on of lights 2001-17 + GL1500**

Automatism for switching on 12V lights with adjustment of intervention with respect to light and delay, including sensor to be positioned under the left mirror

(it can command lights such as: low beam; fog lights, Angels, side lights, perimeter lights, etc.).

**Price: 80 € (Installation 80€)**

GL1800 2012-17	<input checked="" type="checkbox"/>	GL1800 2006-11	<input checked="" type="checkbox"/>	GL1800 2001-05	<input checked="" type="checkbox"/>	F6B	<input checked="" type="checkbox"/>	GL1500	<input checked="" type="checkbox"/>
-------------------	-------------------------------------	-------------------	-------------------------------------	-------------------	-------------------------------------	-----	-------------------------------------	--------	-------------------------------------



These adhesive strips with a black background mount lateral projection LEDs. They are perfect to use as a surround for the headlights. They have a thickness of 2mm each. They are available in two versions: with only white lights (60 cm); with sequential white + yellow lights for the indicators (45 cm). The kit comes complete with cable (the led strips can be shortened by cutting them at the marked points).

**007.1 White led light profile with yellow sequential indicators (pair) Price: 80 € (Installation 80€)**

GL1800 2012-17	GL1800 2006-11	GL1800 2001-05	F6B	GL1500
-------------------	-------------------	-------------------	-----	--------



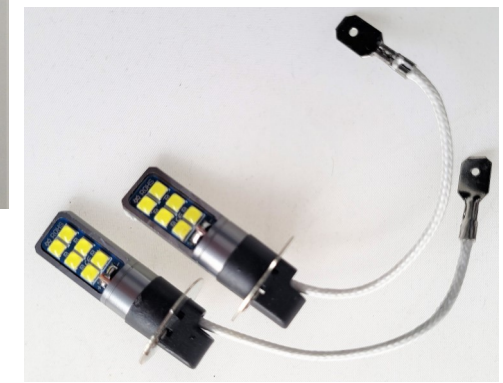
These fog lights with lenticular LED light + Angel Eyes have a power of 2000Lm and are completely protected from dust and stones by a protective glass (waterproof up to 1 m IP67). They are supplied in pairs, complete with wiring control unit with protection fuses.

The specific supports are included in the 2 versions for direct installation on the tip

**010.0 Fog lights with Angels cat-eyes (right + left) 2001-11 Price: 160 € (Installation 80€ button excluded)**

**010.4 Fog lights with Oval lens (right + left) 2012-17 Price: 180 € (Installation 80€ button excluded)**

GL1800 2012-17	GL1800 2006-11	GL1800 2001-05	F6B	GL1500
-------------------	-------------------	-------------------	-----	--------



**011.0 Angels led for fog lights (pair) 2001-11**

The Angels, with a powerful white light, complement the existing fog lights. They are ideal both during the day and in all other conditions. They are sold in pairs and are supplied complete with the specific support which makes assembly on the cap extremely quick.

**Price: 60 € (Installation 80€)**

**075.7 H3 led bulbs for round fog lights (pair) 2001-11**

Compared to the original halogen lamps, these have a higher yield and at the same time heat less, consume less and last longer.

**Price: 50 € (Installation 80€)**

GL1800 2012-17

GL1800 2006-11

GL1800 2001-05

F6B

GL1500



**012.1 2012 model belly pan fits all 2001-17 models**

This cap in ABS, identical to the original, it is supplied raw to be painted. **Price: 160€ (painting 100€)**

GL1800 2012-17

GL1800 2006-11

GL1800 2001-05

F6B






GL1500



**006.0 2012 model shield fits all 2001-17 models**

This ABS front shield, identical to the original, is supplied raw to be painted.

Price: 160 € (verniciatura 100€)






GL1800 2012-17 	GL1800 2006-11 	GL1800 2001-05 	F6B 	GL1500 
---	---	---	---	--



**015.0 Complete stator cover (chromed metal) 2001-17**

This chromed engine cover is much more resistant and aesthetic than the original; it is supplied complete with central headwork and original Honda gasket.

Price: 160 € (Installation 60€)

GL1800 2012-17 	GL1800 2006-11 	GL1800 2001-05 	F6B 	GL1500 
---	---	---	---	--



**021.0 Left glove box electric closing (application on glove box) 2006-17 NEW**

This system allows you to open the flap electrically only with the ignition on; opening takes place by pressing the same opening button (therefore no additional buttons are needed)

**Price: 120 € (Installation €30)**

GL1800 2012-17	GL1800 2006-11	GL1800 2001-05	F6B	GL1500
-------------------	-------------------	-------------------	-----	--------



**014.0 Front fender 2001-17**

This front mudguard in ABS is supplied raw to be painted.

**Price: 130 €**

**(verniciatura 80€)**



**014.1 Front fender half rear 2001-17**

This front half rear fender in ABS is supplied raw to be painted.

**Price: 140 €**

**(verniciatura 80€)**



**014.2 Front fender half rear 2001-17**

This front half rear fender in ABS is supplied raw to be painted.

**Price: 120 €**

**(verniciatura 80€)**

GL1800 2012-17	GL1800 2006-11	GL1800 2001-05	F6B	GL1500
-------------------	-------------------	-------------------	-----	--------



**016.0 Claw led indicators for front mudguard (right + left) 2001-17**

This nice accessory is mounted on the sides of the front fender giving it a particular look, as well as increasing visibility in the event of a turn.

It features dual amber, position and arrow illumination.

**Price: 100 € (Installation 80€)**

GL1800 2012-17	GL1800 2006-11	GL1800 2001-05	F6B	GL1500
-------------------	-------------------	-------------------	-----	--------



**013.3 Yellow arrows + white front led positions (right + left) 2001-17**

**Price: 240 € (Installation 50€)**

**013.4 Yellow arrows + white front led positions + STROBE (right + left) 2001-17**

**Price: 300 € (Installation 80€)**

These yellow indicators with white led position complete with seals, have a transparent glass and contain the electronic adapter inside. (the strobe model is equipped with a small control unit that allows the change of flashing)

GL1800 2012-17	GL1800 2006-11	GL1800 2001-05	F6B	GL1500
-------------------	-------------------	-------------------	-----	--------





**013.1 WHITE front indicators (right + left) 2001-17**

**013.2 SMOKED front indicators (right + left) 2001-17**

These indicators with transparent or smoked lens complete with gaskets replace the original orange ones (they are to be used with orange bulbs). **Price: 60 € (Installation 20€)**

GL1800 2012-17	GL1800 2006-11	GL1800 2001-05	F6B	GL1500
-------------------	-------------------	-------------------	-----	--------

**072.0 Mirrors supports only (right + left) 2001-17**

Pair of mirror supports (they perfectly replace the originals without having to buy the complete mirrors supplied by Honda).

**Price: 90 € (Installation 40€)**



GL1800 2012-17	GL1800 2006-11	GL1800 2001-05	F6B	GL1500
-------------------	-------------------	-------------------	-----	--------



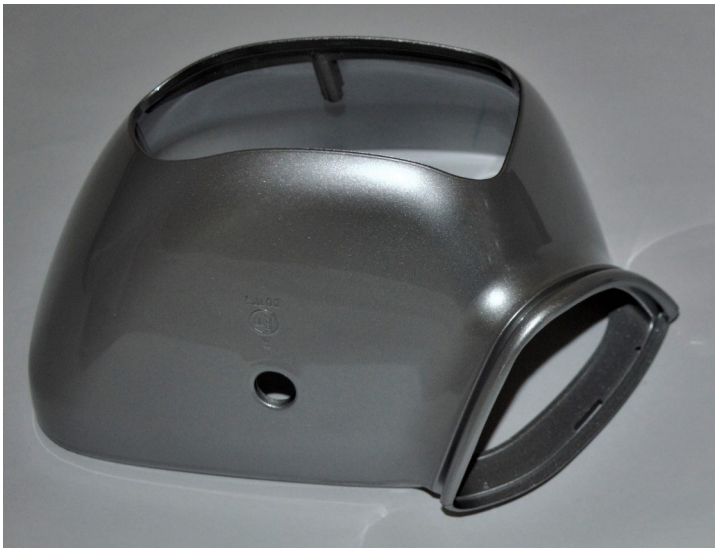
**072.1 Mirror - Support only (left) 2001-17**

**072.2 Mirror support only (right) 2001-17**

Mirror support (perfectly replaces the original without having to buy the complete mirror supplied by Honda).

**Price each: 50 € (Installation 20€)**

GL1800 2012-17	GL1800 2006-11	GL1800 2001-05	F6B	GL1500
-------------------	-------------------	-------------------	-----	--------



**074.1 Mirror - Casing only (right) 2001-17**

**074.0 Mirror only Casing (left) 2001-17**

These rear view mirror caps are a perfect replacement for the originals, they are to be painted as desired.

**Price: 50 € (Installation 30€ - Painting 50€)**

GL1800 2012-17		GL1800 2006-11		GL1800 2001-05		F6B		GL1500	
-------------------	--	-------------------	--	-------------------	--	-----	--	--------	--



**073.0 Mirrors - Mirrors only (right + left) 2001-17**

These rear view mirrors are a perfect replacement for the originals.

**Price: 60 € (Installation 10€)**

GL1800 2012-17		GL1800 2006-11		GL1800 2001-05		F6B		GL1500	
-------------------	--	-------------------	--	-------------------	--	-----	--	--------	--



**OUR SUPPORT ALLOWS YOU TO TAKE PHOTOS AND MOVIES WITH THE MOST PHONES BRANDS ON THE MARKET. FURTHERMORE, GIVEN ITS POSITION, THE AIR INLET GUARANTEES GOOD COOLING IN THE SUMMER**



This stand is manufactured from black powder coated aluminium. Use the phone holder system produced by Givi/Kappa. It is fixed to the air intake with the supplied stainless steel screws, it is also possible to adjust the inclination using the appropriate screw (it does not require any holes or modifications but above all the air intake remains usable).

Accommodates phones 55 to 90mm wide and 115 to 175mm long

**Central support to be applied to the air intake complete with Givi Goldwing 2001-17 phone holder 041.5 BLACK powder coated Price: 180 € (FREE Installation )**

GL1800 2012-17	GL1800 2006-11	GL1800 2001-05	F6B	GL1500
-------------------	-------------------	-------------------	-----	--------



This very stable and safe support allows you to easily fix the Givi/Kappa phone holder. It is fixed to the handlebar with the supplied stainless steel screws. It is available in the left and right version. The phone holder accommodates phones measuring 55-90mm wide and 115-175mm long

**041.1 Handlebar mount FOR Givi/kappa phone holder (left) Goldwing 2001-17**

**Price: 35 € (+ Givi/Kappa phone holder 65€)**

**041.2 Handlebar mount FOR Givi/Kappa phone holder (right) Goldwing 2001-17**

**Price: 35 € (+ Givi/Kappa phone holder 65€)**

GL1800 2012-17	GL1800 2006-11	GL1800 2001-05	F6B	GL1500
-------------------	-------------------	-------------------	-----	--------

# HANDLEBAR SWITCHES



Upon request, we carry out customizations matching your needs

**017.3 Handlebar switch (left) 3 buttons 2001-17**

**017.4 Handlebar switch (right) 3 buttons 2001-17**

Compared to the previous ones, these new generation push-button panels integrate perfectly with the existing controls. They have 3 switches with the relative red signaling LEDs. The kit is supplied already wired with 1.5 meters of cable and the 2 fixing screws.

Price: 140 €

(Some possible variations: buttons can be mounted and/or 2-position switches with LED lights of different colours).

GL1800 2012-17	GL1800 2006-11	GL1800 2001-05	F6B	GL1500
-------------------	-------------------	-------------------	-----	--------



**017.0 Handlebar switch (left) 1 button with switch (1on off) 2001-17**

On/off switch to turn a given accessory on and off

**017.1 Handlebar switch (left) 1 button with button (on off) 2001-17**

Only great button to activate the high beam flash, horns, a gate opener or other.

**017.2 Handlebar switch (left) 1 button with double switch (on1 off on2) 2001-17**

The double switch turns on and off 2 distinct services alternatively; while you turn on a service, by leaving it on you can also activate the second one, such as the fog light or other.

**017.7 Handlebar switch (left) 1 button with double button (on off on) 2001-17**

Double button, for 2 gate openers or 2 different sounds of horn or other.

These convenient thumb-operated push-button panels can be installed without any holes or modifications on both models with and without navigator and in the various versions they lend themselves to countless APPLICATIONS: The kit is supplied already wired with 1.5 meters of cable and the stainless steel screw for fixing.

Price: 017.0 - 60 €      Price: 017.1 - 60 €      **Surcharge: 30 € \* LED**

Price: 017.2 - 70 €      Price: 017.7 - 80 €

GL1800 2012-17	<input checked="" type="checkbox"/>	GL1800 2006-11	<input checked="" type="checkbox"/>	GL1800 2001-05	<input checked="" type="checkbox"/>	F6B	<input checked="" type="checkbox"/>	GL1500	<input checked="" type="checkbox"/>
-------------------	-------------------------------------	-------------------	-------------------------------------	-------------------	-------------------------------------	-----	-------------------------------------	--------	-------------------------------------



**038.0 Lighting application central dashboard 2012-17**

This application allows you to illuminate that dark part of the dashboard, as well as completing/improving the aesthetics of the dashboard, and identifying the controls in the dark.

Price applicazione: 120 € (Installation 40€)

GL1800 2012-17	<input checked="" type="checkbox"/>	GL1800 2006-11	<input checked="" type="checkbox"/>	GL1800 2001-05	<input checked="" type="checkbox"/>	F6B	<input checked="" type="checkbox"/>	GL1500	<input checked="" type="checkbox"/>
-------------------	-------------------------------------	-------------------	-------------------------------------	-------------------	-------------------------------------	-----	-------------------------------------	--------	-------------------------------------



**008.0 Windshield with ventilation hole 2001-17**

**008.1 Windshield without ventilation hole 2001-17**

This windscreen has the same dimensions and color as the original, (without the annoying transparent film which will inevitably get damaged).

**On request we can shorten the height to our requested measure (40€ surcharge)**

**Price: 180 € (Installation 20€)**

GL1800 2012-17	GL1800 2006-11	GL1800 2001-05	F6B	GL1500
-------------------	-------------------	-------------------	-----	--------



**009.0 Windshield Vent 2001-17**

This smoked air intake is a perfect replacement for the original.

**Price: 60 € (Installation 20€)**

GL1800 2012-17	GL1800 2006-11	GL1800 2001-05	F6B	GL1500
-------------------	-------------------	-------------------	-----	--------



**008.2 Electric windshield (excluding button) 2001-17**

(for 2006-11 models the shield needs to be replaced with the 2012 version Art. 006.0)

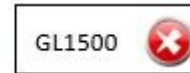
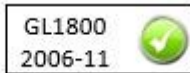
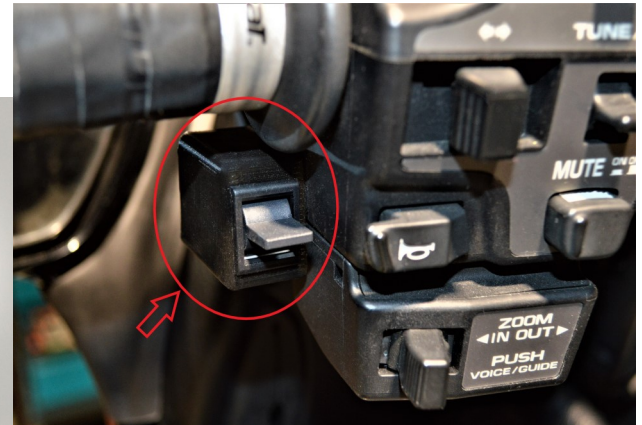
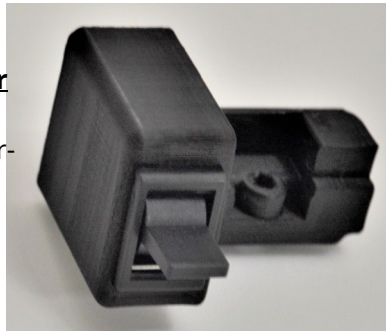
This innovative system for motorising your windscreen allows for a movement of 75 mm. It differs from any other system on the market for its **ease and speed of assembly in less than 10 minutes and with only 4 screws (stainless steel), without holes and modifications.** The system also improves driver safety by releasing the windscreen in the event of a serious impact.

**Price: 380 € (Installation 20€)**

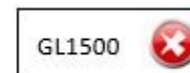
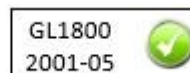
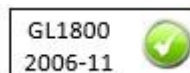
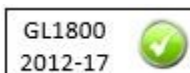
**017.8 Wired handlebar switch for windscreen 008.2**

Up-Down button complete with wiring and plugs, specific for electric windscreen 008.2

**Price: 120 € (Installation 80€)**



**008.3 Rear windshield** This solution, appreciated by many, avoids partial air turbulence and the adhesive sticker completes the customization. It is installed behind the passenger backrest without the need to puncture the bodywork **Price: 140 € (Installation 20€) NUOVO**





This important measuring tool constantly monitors tire pressure and temperature. The data are displayed on the display of the control unit to be mounted on the handlebar. It turns on and off automatically and signals us visually and acoustically through settable alerts: low pressure, high pressure, temperature and low battery of the control unit.

NB: for greater safety, correct tire inflation pressure prevents tread wear and specifically: if it is too high it will wear in the center and if it is too low at the sides

The kit includes: specific support; external radio valves; usb cable for recharging; fixing screws and key.

**018.0 Tire pressure and temperature monitor complete with accessories and support (left) 2001-17**

**018.1 Tire pressure and temperature monitor complete with accessories and support (right) 2001-17**

Price: 120 € (Installation omaggio)

GL1800 2012-17	GL1800 2006-11	GL1800 2001-05	F6B	GL1500
-------------------	-------------------	-------------------	-----	--------



This simple tool allows you to monitor the battery status with a numerical display and a colored LED scale.

It is fixed to the handlebar with its specific support and the screws supplied (complete with cable).

**035.2 Handlebar voltmeter (left) 2001-17**

**035.3 Handlebar voltmeter (right) 2001-17**

Price: 80 € (Installation 40€)

GL1800 2012-17	GL1800 2006-11	GL1800 2001-05	F6B	GL1500
-------------------	-------------------	-------------------	-----	--------





**035.0 Voltmeter for models without tweeter 2005-11**

This simple tool allows you to monitor the status of your battery. With its round shape, it fits perfectly in all models in the space of the tweeter speakers (where not present), on the right or on the left.

Price: 50 € (Installation 40€)

GL1800 2012-17	✗	GL1800 2006-11	✓	GL1800 2001-05	✗	F6B	✗	GL1500	✗
-------------------	---	-------------------	---	-------------------	---	-----	---	--------	---



**035.1 Voltmeter (right or left) 2012-17**

This simple tool allows you to monitor the status of your battery.

With its "comma" shape, it fits indifferently and perfectly in all models in the upper part of the loudspeaker space on the right or on the left (with or without the presence of tweeter loudspeakers).

Price: 50 € (Installation 40€)

GL1800 2012-17	✓	GL1800 2006-11	✓	GL1800 2001-05	✗	F6B	✓	GL1500	✗
-------------------	---	-------------------	---	-------------------	---	-----	---	--------	---

# WE COVER YOUR SADDLES AND BACKREST WITH TECHNICAL MATERIAL

ENTIRELY HANDMADE, WITH A SPECIAL ALCANTARA-TYPE FABRIC: CUT-RESISTANT, NON-SLIP. THEY DO NOT GET HOT IN THE SUN. THEY DRY QUICKLY WHEN THEY GET WET.

Finally, the diamond-shaped seat increases the padding which consequently improves comfort and breathability.

Available in all versions from 2001 to 2023

The seams can be made in different colors. IT IS ALSO POSSIBLE TO EVALUATE CUSTOMIZATIONS...





**060.0 COVER Sella Rombi 2001-17 Price: € 600**

**060.1 Rhombus saddle cover + 2 embroideries 2001-17 Price: € 620**

**060.2 COVER Sella Rombi with backrest 2001-17 Price: € 650**

**060.3 COVER Rombi saddle with backrest + 2 embroideries 2001-17 Price: € 670**

**060.4 Rombi saddle cover with lumbar support + 1 embroidery 2018-2023 Price: € 750**

**060.5 COVER Sella Rombi with backrest + 1 embroidery 2018-2023 Price: € 750**

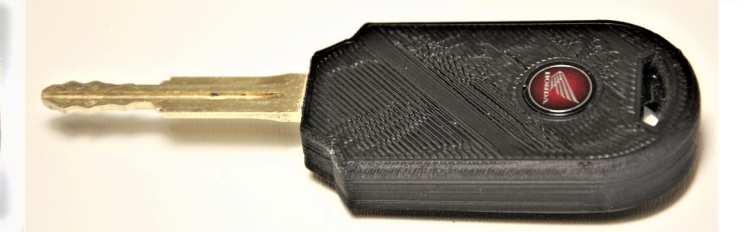


**037.0 Gear counter (right) 2012-17**

This excellent quality instrument is equipped with a specific support which guarantees its stability and correct passage of the wire; furthermore the already wired double plug allows you to detach the dashboard cover without disassembling the display. Finally, the cable that is connected to the diagnostic plug is long enough not to hinder motorcycle maintenance.

**Price: 90 € (Installation 50€)**

GL1800 2012-17		GL1800 2006-11		GL1800 2001-05		F6B		GL1500	
-------------------	--	-------------------	--	-------------------	--	-----	--	--------	--



**030.0 Remote control container with key housing (and transponder mod. Europa) 2012-17**

This gadget allows you to incorporate the key and remote control into a single and practical object (the supply includes the container only; **remote control key and transponder are not included.**)

**On request, it is possible to use the boot closure button to arm and disarm an anti-theft/alarm but a 1-button remote control is required (surcharge including assembly €100)**

**Price: 40 € (montaggio 20€)**

GL1800 2012-17		GL1800 2006-11		GL1800 2001-05		F6B		GL1500	
-------------------	--	-------------------	--	-------------------	--	-----	--	--------	--



**020.0 Adjustable clutch and brake levers ( right + left ) 2001-17**

These innovative levers are adjustable in length and width. They are also accident prevention by lifting themselves up when necessary. The black color makes them discreet and the aluminum from which they are made is light. All this gives the bike a sporty and technological aesthetic touch.

Price: 50 €

GL1800 2012-17	GL1800 2006-11	GL1800 2001-05	F6B	GL1500
-------------------	-------------------	-------------------	-----	--------



**040.2 Black side stand foot with 2001-17 logo**

This foot triples the support surface of the side stand, significantly decreasing the possibility of sinking into unstable surfaces. It must be fixed to the foot of the side stand with the appropriate Allen screw.

Price: 30 €

GL1800 2012-17	GL1800 2006-11	GL1800 2001-05	F6B	GL1500
-------------------	-------------------	-------------------	-----	--------



# AUDIO

## 019.0 HERTZ front speakers with adapters

These pairs of speakers produced by Hertz deliver a power of up to 220 Watts, with a clean and brilliant sound without distortion. The assembling is done through its exclusive adapters (complete with stainless steel screws) which increase the case resonance thus improving its acoustics, and allow the fixing without any modification. The special fully convex "v-cone" is designed for the best response to mid-high frequency notes with powerful bass, giving a marked improvement in the audio system.

**Price: 150 € (Installation 30€)**



GL1800 2012-17	GL1800 2006-11	GL1800 2001-05	F6B	GL1500
-------------------	-------------------	-------------------	-----	--------

## 019.7 Ground Zero front speakers with adapters

These pairs of 2-way speakers produced by Ground Zero with a diameter of 13cm deliver a power of up to 110 Watts on 3 ohm, with a clean and brilliant sound without distortions. The assembly takes place using stainless steel screws and its exclusive adapters that increase the case resonance thus improving its acoustics. This system allows fixing without any modification. The use of this system gives a marked improvement to the audio system.

**Price: 160 € (Installation 30€)**



GL1800 2012-17	GL1800 2006-11	GL1800 2001-05	F6B	GL1500
-------------------	-------------------	-------------------	-----	--------

## 019.8 Ground Zero rear speakers with adapters

These pairs of 2-way speakers produced by Ground Zero with a diameter of 10cm deliver a power of up to 110 Watts on 3 ohm, with a clean and brilliant sound without distortions. The assembly takes place using stainless steel screws and its exclusive adapters that increase the case resonance thus improving its acoustics. This system allows fixing without any modification. The use of this system confers a marked improvement of the audio system.

**Price: 160 € (Installation 30€)**



GL1800 2012-17	GL1800 2006-11	GL1800 2001-05	F6B	GL1500
-------------------	-------------------	-------------------	-----	--------

# AUDIO

## 019.9 Pioneer Speakers (Front 2001-11/Rear 2001-17)

These pairs of 2-way speakers produced by Pioneer deliver a power of up to 210 Watts, with a clean and brilliant sound without distortion. The assembly takes place through its exclusive adapters (complete with stainless steel screws) which increase the case resonance thus improving its acoustics and allowing it to be fixed without any modification. The use of this system gives a marked improvement to the audio system.

Price: 130 € (Installation 30€)



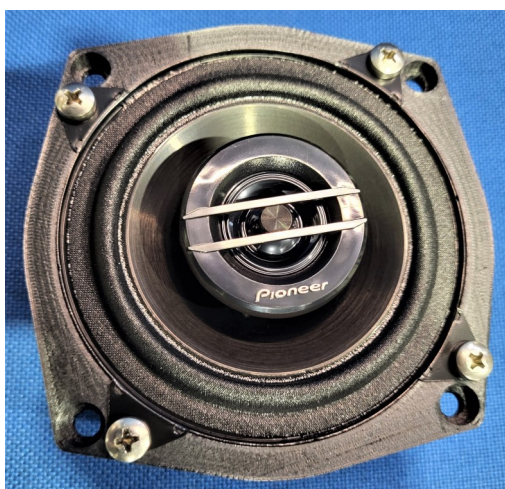
Front mounted:

GL1800 2012-17	<input checked="" type="checkbox"/>	GL1800 2006-11	<input checked="" type="checkbox"/>	GL1800 2001-05	<input checked="" type="checkbox"/>	F6B	<input checked="" type="checkbox"/>	GL1500	<input checked="" type="checkbox"/>
-------------------	-------------------------------------	-------------------	-------------------------------------	-------------------	-------------------------------------	-----	-------------------------------------	--------	-------------------------------------

Rear mounted:

GL1800 2012-17	<input checked="" type="checkbox"/>	GL1800 2006-11	<input checked="" type="checkbox"/>	GL1800 2001-05	<input checked="" type="checkbox"/>	F6B	<input checked="" type="checkbox"/>	GL1500	<input checked="" type="checkbox"/>
-------------------	-------------------------------------	-------------------	-------------------------------------	-------------------	-------------------------------------	-----	-------------------------------------	--------	-------------------------------------

Front



Rear



## 019.2 Tweeter for front speakers

This pair of Tweeters complete with filters, with their specific adapters, fit perfectly into the setup. Their use greatly improves the acoustics in models that are not already equipped with it; assembly is simple, and without any modification (they must be connected in parallel to the speakers existing).

Price: 40 € (Installation 30€)



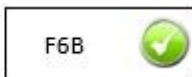
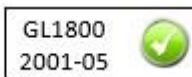
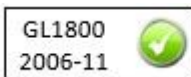
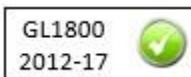
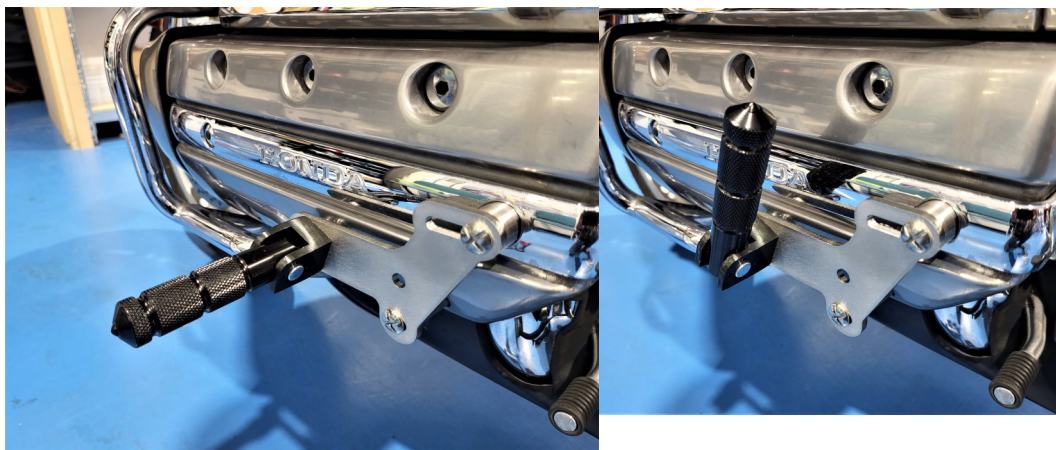
GL1800 2012-17	<input checked="" type="checkbox"/>	GL1800 2006-11	<input checked="" type="checkbox"/>	GL1800 2001-05	<input checked="" type="checkbox"/>	F6B	<input checked="" type="checkbox"/>	GL1500	<input checked="" type="checkbox"/>
-------------------	-------------------------------------	-------------------	-------------------------------------	-------------------	-------------------------------------	-----	-------------------------------------	--------	-------------------------------------

**039.1 Front footpegs (pair) 2001-17**

These advanced footrests are perfect for changing driving positions while relaxing your legs.

Unlike others on the market, if dropped, they DO NOT damage the engine covers but actually protect them. Available **BLACK OR SILVER**

**Price: 150 € (Installation 30€)**



**039.0 Front footpegs (pair) 2001-17**

These footrests are perfect replacements for the originals.

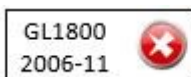
**Price: 60 € (Installation 30€)**



**032.0 High efficiency side led lights BLACK frame (pair) 2012-17**

These lights illuminate the side of the road giving you more control, without annoying others, with a visibility effect of 180 degrees.

**Price: 40 € (Installation 80€)**







### 059.1 Boot mats and bags 2001-11

These comfortable carpet mats finished with border protect and soundproof trunks and bags, and the embroidered logo adds an extra touch of class.

**Price: 50 €**

GL1800 2012-17		GL1800 2006-11		GL1800 2001-05		F6B		GL1500	
-------------------	--	-------------------	--	-------------------	--	-----	--	--------	--



### 059.2 Trunk mats and bags 2012-17

These comfortable carpet mats finished with border protect and soundproof the trunks and bags, adding an extra touch of class.

**Price: 50 €**

GL1800 2012-17		GL1800 2006-11		GL1800 2001-05		F6B		GL1500	
-------------------	--	-------------------	--	-------------------	--	-----	--	--------	--



### 059.3 F6B bag mats

These comfortable carpet mats finished with border protect and soundproof the bags, adding an extra touch of class.

**Price: 40 €**

GL1800 2012-17		GL1800 2006-11		GL1800 2001-05		F6B		GL1500	
-------------------	--	-------------------	--	-------------------	--	-----	--	--------	--



**042.0 Centralized locking of bags F6B**

This system allows you to open and close the bags without having to keep the ignition key in the rear block. Closing and opening is signaled with a flash and 2 flashes from the arrows, the system includes 2 remote controls **Price: 380 € (the price includes Installation) NUOVO**



**058.0 Short antenna for F6B**

This short antenna measures 75mm and perfectly replaces the original but with a small footprint, assembly is immediate without any modification. In addition, this new antenna improves the reception of FM radio signals.

**Price: 25 €**

GL1800 2012-17	GL1800 2006-11	GL1800 2001-05	F6B	GL1500
-------------------	-------------------	-------------------	-----	--------



**058.1 Short antenna 37 cm for GL1800 2001-17**

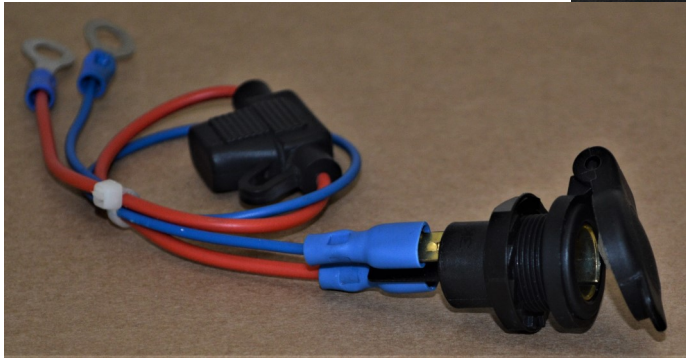
**058.2 Short antenna 54 cm for GL1800 2001-17**

This new rubber antenna perfectly replaces the original but with a smaller footprint, compared to the 97cm of the supplied one. It also improves the reception of FM radio signals.

The assembly is immediate without any modification (not having the joint it is flexible but not foldable).

**Price: 40 € (Installation omaggio)**

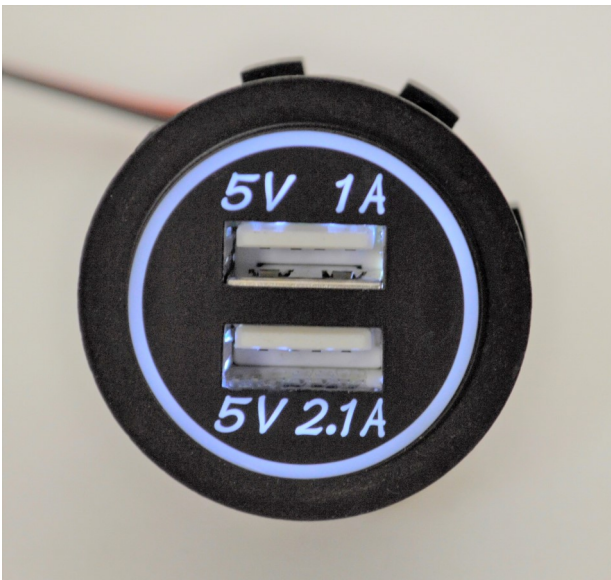
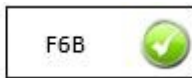
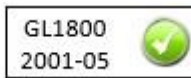
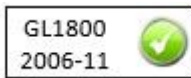
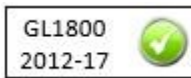
GL1800 2012-17	GL1800 2006-11	GL1800 2001-05	F6B	GL1500
-------------------	-------------------	-------------------	-----	--------



**036.0 Socket with waterproof spring closure 2001-2017**

This German-type DIN power socket allows you to easily connect a maintenance technician and any other accessory powered at 12 V max 16 A. The special spring closure protects it from bad weather. It is supplied complete with watertight fuse holder, fuse and connection cables

Price: 40€ (Installation 40€)

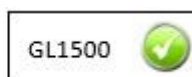
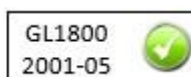
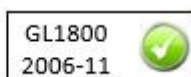
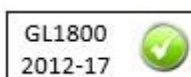


**033.0 Illuminated double usb socket 2001-17**

This USB socket has 2 illuminated female connections and is ideal for charging or operating any device using this technology (tested for TomTom navigators), it comes complete with cable.

It is ideal for installation inside the left drawer or in the trunk

Price: 40 € (Installation 40€)



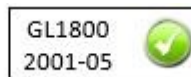
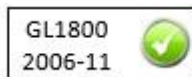


**034.0 Chromed front engine guards (right + left) 2001-17** Price: 120 €

**034.1 Chromed front engine guard (left) 2001-17** Price: 70 €

**034.2 Chromed front engine guard (right) 2001-17** Price: 70 €

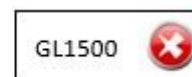
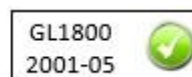
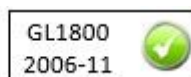
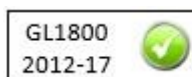
These crash bars minimize damage in the event of impacts and are supplied as a replacement for the originals.

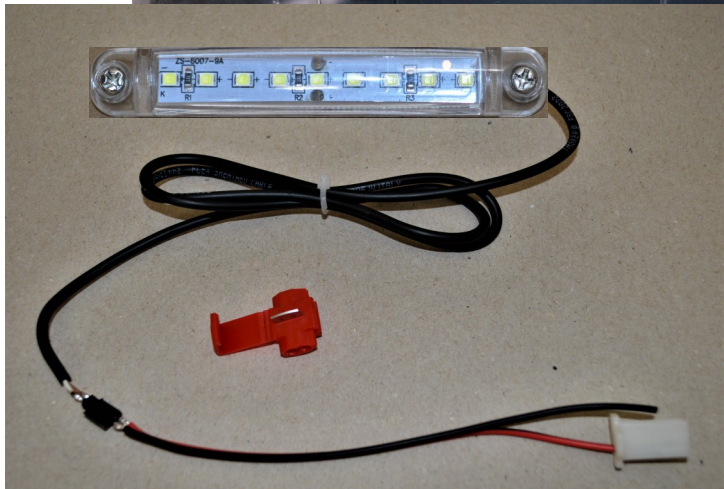


**057.0 Pole with flag for fixing on 2001-17 antenna**

This chromed rod, complete with flag, must be fixed to the antenna stem with the special Allen key included in the kit.

Price: 35 €





**054.0 Automatic led lighting trunk 2001-17**

This kit allows you to light up the trunk by automatically turning on the light when you open it.  
Includes led strip and wiring

**Price: 40 € (Installation 60€)**

GL1800 2012-17	<input checked="" type="checkbox"/>	GL1800 2006-11	<input checked="" type="checkbox"/>	GL1800 2001-05	<input checked="" type="checkbox"/>	F6B	<input type="checkbox"/>	GL1500	<input type="checkbox"/>
-------------------	-------------------------------------	-------------------	-------------------------------------	-------------------	-------------------------------------	-----	--------------------------	--------	--------------------------



**054.2 Automatic lighting switch-off trunk (2 minutes) 2001 -17**

This circuit makes it possible to automatically switch off the boot light even if it remains open after 2 minutes (avoiding running down the battery). (the device can be installed immediately using its plugs already mounted)

**Price: 40 € (Installation €20)**

GL1800 2012-17	<input checked="" type="checkbox"/>	GL1800 2006-11	<input checked="" type="checkbox"/>	GL1800 2001-05	<input checked="" type="checkbox"/>	F6B	<input type="checkbox"/>	GL1500	<input type="checkbox"/>
-------------------	-------------------------------------	-------------------	-------------------------------------	-------------------	-------------------------------------	-----	--------------------------	--------	--------------------------



Available model with led strip both position and stop



**052.0 Boot spoiler + led stop strip 2001-17**

**052.1 Boot spoiler + stop and position led strip 2001-17**

Raw spoiler to be painted, complete with red light LED strip with smoked lens **Price: 052.0 - 160 € (Installation 60€)**

**Price: 052.1 - 180 € (Installation 60€)**

GL1800 2012-17	GL1800 2006-11	GL1800 2001-05	F6B	GL1500
-------------------	-------------------	-------------------	-----	--------



THIS MODEL TRANSFORMS THE STOP LED into FLASHING and ALSO COMMANDS LIGHTS. IN-CANDESCENT

THIS MODEL TRANSFORMS THE STOP LED INTO POSITION AND FLASHING STOP



**053.0 Stop light flasher for GL1800 + GL1500**

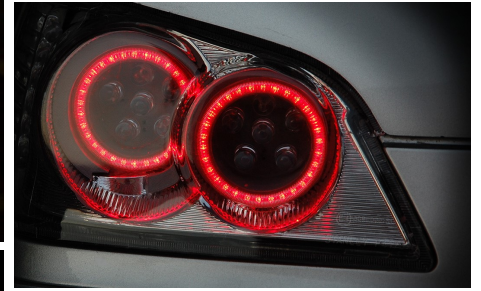
**053.1 Stop + position flasher for GL1800 + GL1500**

This device ensures that, as soon as the brake is pressed, the spoiler stop flashes first 4 times quickly and then 4 times slowly. In the end it stays on continuously until the brake is released (the device can be installed immediately using its plugs already mounted)§

**Price: 053.0 - 40 € (Installation 30€)**

**Price: 053.1 - 60 € (Installation 30€)**

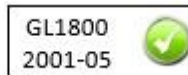
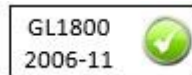
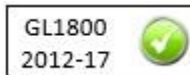
GL1800 2012-17	GL1800 2006-11	GL1800 2001-05	F6B	GL1500
-------------------	-------------------	-------------------	-----	--------



### 050.0 Boot lights with Angels and led stop (right + left) 2001-17

These spectacular lights with white glass are perfect with any color of the bike. Internally they house 4 red LED rings (2 per light) which act as a position and 20 10mm red LEDs for the stop lights (both the angels and the stop led are transparent when off).

Price: 320 € (Installation € 40)

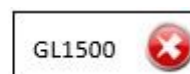
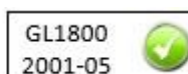
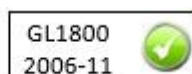
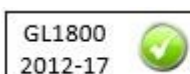


### 055.0 Luggage rack for trunk complete with chromed spacers 2001-17

### 055.1 Luggage rack for trunk complete with black spacers 2001-17

This indispensable and aesthetic accessory allows bags or parcels to be fixed above the trunk. The special spacers to be used if the spoiler is mounted are also supplied.

Price: 170 € (Installation 60€)





**New**

**Complete tail light or application**



**Progressive arrows,  
stylized location**



**Reverse**

**Stop increased**



**056.1 TAIL LIGHT COMPLETE with progressive indicators and Led reverse gear 2012-17**

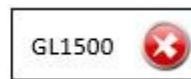
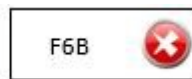
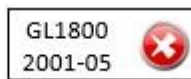
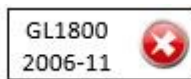
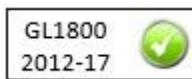
This innovative full LED rear light contains 4 groups of lamps with the function of progressive turn signals, reverse lights, increased stop lights, **stylized LED position** (the basic light is an original Honda overhauled)

**Price COMPLETE LIGHT: € 480 (installation including reverse connection €40) NEW**

**056.0 Progressive indicators and Led reverse gear (application on rear lights) 2012-17**

This process consists in the installation inside the light of 4 groups of LED lamps with the function of progressive indicators, reverse lights, oversized stop lights, **stylized LED position**. The work is performed directly on your tail-light (alternatively, by booking, you can pick up a ready-made taillight leaving your own)

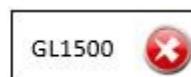
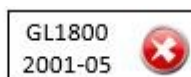
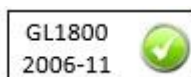
**Price of lamps + application: € 320 (installation including reverse connection €40) NEW**



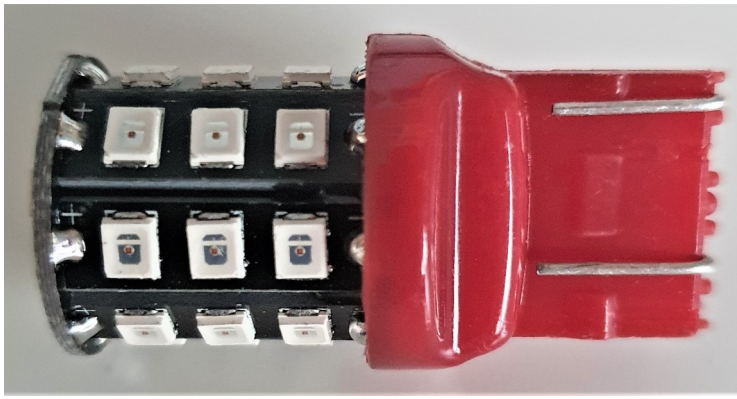
**051.0 Saddlebag lights with led position and stop (right + left) 2006-11**

These lights each house 2 red LED bars which act as position and stop. When switched off, they look like the originals, with the attachment for positioning the indicator (lamp holder excluded).

**Price: 120 € (Installation 40€)**







### 075.2 Red LED T20 position / stop light

This 21W / 5W dual intensity red LED bulb is used for the positions and stop lights of bags and trunks. It has no polarity

Price each: 15€



### 075.3 Lampada LED T20 arancione + adapter

Questa lampadina LED è utilizzata per le frecce e viene fornita con l'apposito adattatore. Price each: 15 €

(Installation 30€)



### 075.6 LED T20 white position lamp and orange arrow 2001-17

This double light bulb must be positioned inside the front indicators. It is supplied with the appropriate adapter and a limiter for the positions. Furthermore, the American versions already have the position light, while for the European ones the bulb holder must be replaced with a 3-wire one and the connection made.

**Attention for the connection the help of an expert is necessary.**

Price each: €25 (1 3-wire lampholder + €15)

(installation 2 pcs right + left 70€)

GL1800 2012-17	GL1800 2006-11	GL1800 2001-05	F6B	GL1500
<input checked="" type="checkbox"/>	<input checked="" type="checkbox"/>	<input checked="" type="checkbox"/>	<input checked="" type="checkbox"/>	<input checked="" type="checkbox"/>

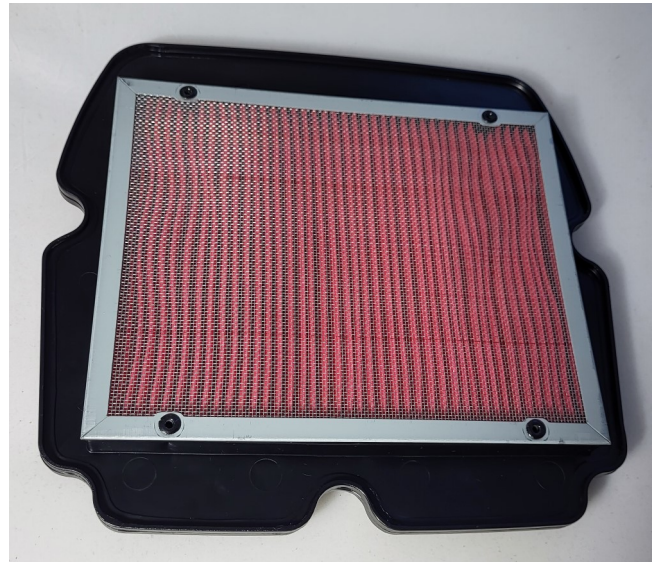


### 070.0 Oil filter 2001-17

This filter is an essential tool in an engine, as it separates the liquid part from the solid particles which inevitably enter the circulation. For good maintenance, the filter must be replaced at each oil change and in any case no later than 12,000 km / 15,000 km.

Price: 10€

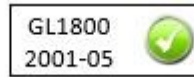
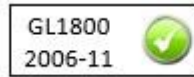
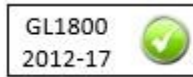
GL1800 2012-17	GL1800 2006-11	GL1800 2001-05	F6B	GL1500
<input checked="" type="checkbox"/>	<input checked="" type="checkbox"/>	<input checked="" type="checkbox"/>	<input checked="" type="checkbox"/>	<input checked="" type="checkbox"/>



**070.1 Goldwing air filter 2001-17**

Regular replacement of this filter increases performance and decreases consumption.

Price: 35 € (Installation 120€)



**070.2 NGK candles (kit 6 Pcs.) Goldwing 2001-17**

These spark plugs are a perfect replacement for the originals (regular replacement increases engine efficiency).

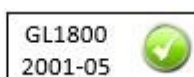
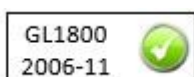
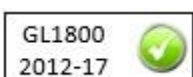
Price: 33 € (Installation 40€)



**070.4 Battery 12V 18Ah 250A Goldwing 2001-17**

The battery is supplied ready for connection and already charged (it is advisable to replace the battery periodically, approximately every 2 years, before being left on foot...).

Price: 80 € (Installation 20€)





**070.3 Engine oil PUTOLINE 10W-40 (1 liter) Goldwing 2001-17**

This oil is the perfect combination for your engine; it is also the right compromise of alcohol content for all seasons. (it is advisable to change the oil no later than 12,000 km / 15,000 km.).

**Price each: 12 €**

GL1800 2012-17	GL1800 2006-11	GL1800 2001-05	F6B	GL1500
-------------------	-------------------	-------------------	-----	--------



**071.0 Brake pads (1 pair) 2001-17**

These brake pads are softer and thicker than the originals, thus ensuring long life and prompt braking without damaging the discs (front and rear for both normal and petal discs).

**Price: 25 € (Installation 20€)**



**071.1 Brake pads (2 pairs) 2001-17**

These brake pads are softer and thicker than the originals, thus ensuring long life and prompt braking without damaging the discs (front and rear for both normal and petal discs).

**Price: 40 € (Installation 30€)**

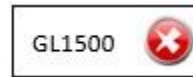
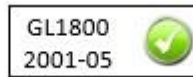
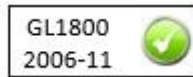
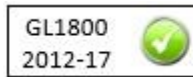
GL1800 2012-17	GL1800 2006-11	GL1800 2001-05	F6B	GL1500
-------------------	-------------------	-------------------	-----	--------

## 080.0 Coupon: **NEW**



- Oil and filter change
- Replacement of the air filter
- Checking levels and topping up liquids
- Cardan oil change
- New candles

**Price: 270 € (labor included)**



### T-shirt for Wingers

#### 103.0 ALIDORO.STORE T-shirts

Available sizes: M, L, XL, XXL.

**Price: 10 €**



#### 101.0 Wheelchair evolution t-shirt

Available sizes: M, L, XL, XXL.

**Price: 15 €**



#### 100.0 Evolution Tee

Available sizes: M, L, XL, XXL.

**Price: 15 €**



#### 102.0 Skull T-Shirt

Available sizes: M, L, XL, XXL.

**Price: 15 €**



**104.0 Cap with logo Price: 6 €**

Gray designer cap with visor. One size fits all, adjustable with Velcro.



**105.0 Branded multifunction pens**

This nice gadget is a touch stylus, acts as a support for the mobile phone, naturally writes...

**Price: 2 €**



**106.0 Patch 2001-17 Price: 5 €**

Embroidered patch for jacket and waistcoat, with ALI D'ORO logo (dimensions 8cmx3cm)

**106.1 Patch 2018-22 Price: €5**

Embroidered patch for jacket and waistcoat, with ALI D'ORO logo (dimensions 8cmx3cm)



**107.0 Key ring Price: 1 €**

Designer key ring, Goldwing shape

# Contacts

Numero Verde  
**800-946539**



E-commerce Website:  
[www.alidoro.store](http://www.alidoro.store)



Facebook:  
Ali D'Oro



Instagram:  
[alidoro.store\\_goldwing](https://www.instagram.com/alidoro.store_goldwing)



E-mail:  
[info@alidoro.store](mailto:info@alidoro.store)  
[eric@alidoro.store](mailto:eric@alidoro.store)



Shipping throughout Europe:



**Point of sale/Installation at:**

Marfed s.a.s.  
Via Torino, 42  
20063 Cernusco S.N. (MI) Italy  
P.IVA/C.F. 08399800153  
Tel. +39 02 210112.1

